

Download PDF



Interactive
PDF

ELOCK2

Door guard TWS-Series

Intelligent & stylish



Replaces unsightly
"frogs" on the door



High quality stainless
steel in slim design



Simple and fast
upgrade

INNOVATIVE ACCESS SOLUTIONS FROM THE
FIRST PLACE WINNER

MADE IN GERMANY



NOTAUSGANG



TÜR ALARMGESICHERT



**NUR IM NOTFALL
ÖFFNEN**

ELOCK2



Your added value

Escape route safety device

Deterrent pre-alarm on light operation, silences on release. Permanent alarm when opening.

Single release / permanent release

Short or long-term opening without alarm with an authorized transponder.

Release according to schedule

Automatic deactivation of the alarm according to defined schedule.

Quality and design

Housing made of high quality stainless steel. Suitable for any type of door.

Unauthorized person



- Simple and fast retrofitting
- Seamless integration into the existing access management system

Efficient escape route protection:

With the TW4S door guard from ELOCK2, doors can be safely accessed at all times in the event of danger. No additional electrical locking elements are required. The combination of the TW4S escape route safety system and the self-locking panic lock from ELOCK2 ensures reliable and barrier-free opening and closing of doors.

Short-term release or permanent release

Emergency exit doors secured with the TW4S door guard can be accessed in both directions with an authorized transponder. In addition, these doors can be released for a freely definable time or permanently.

Coupling with a fire alarm system or intruder alarm system

Depending on the solution variant, one or more entrances are available for connection to a fire alarm system (BMA) or intruder alarm system (EMA). When the fire alarm system is triggered, a door can be released and then locked again after the system has been reset. In addition, it is possible to control external signal transmitters via an alarm contact or to forward a message to a building control system.



Interested?
Request online without obligation!
Scan QR code or click link

The right solution for every application

The diagram illustrates three types of panic exit doors, each with a red label on the left and a corresponding door assembly on the right.

- Panic E: inside pusher, outside knob**
 - The door is shown in a closed position with a red arrow pointing to the handle labeled "locked" and a padlock icon.
 - The door assembly features a red bell icon and the text "Open without Release" above the handle.
 - A green arrow points away from the door, labeled "Escape route always free".
- Panic B: both sides pusher**
 - The door is shown in a closed position with a red arrow pointing to the handle labeled "locked" and a padlock icon.
 - The door assembly features a red bell icon and the text "Open without Release" above the handle.
 - A green arrow points away from the door, labeled "Escape route always free".
 - A grey arrow points towards the door, labeled "free access" with a padlock icon.
- Door guard bidirectional**
 - The door is shown in a closed position with a red arrow pointing to the handle labeled "locked" and a padlock icon.
 - The door assembly features a red bell icon and the text "Open without Release" above the handle.
 - A green arrow points away from the door, labeled "Escape route always free".
 - A green arrow points towards the door, labeled "Escape route always free".

Each door assembly is shown in a 3D perspective view, highlighting the handle and the door frame. The background of each section shows a different setting: a building exterior for Panic E, a parking garage for Panic B, and a hallway for Door guard bidirectional.

Bidirectional escape route protection for doors with escape route function in both directions.

If an escape door separates different fire compartments and at the same time different usage units, the escape route must be accessible in both directions in emergency situations.

With the TW4 door guard from ELOCK2, the doors can be safely accessed from both sides at all times in the event of an emergency. No additional electrical locking elements are required.

TW4S - standard, battery operated:

- Standard with transponder key
- Optional with time management (.ZK)
- Optional with MorseCode (.MRS)
- Can be combined with locking cylinder

TW6S - radio-controlled, battery-operated:

- Release with transponder key or via radio (control via external system - potential-free contact)
- Optional with time management (.ZK)
- Optional with MorseCode (.MRS)
- Can be combined with locking cylinder

TW6S.TAST - with radio pushbutton, battery operated:

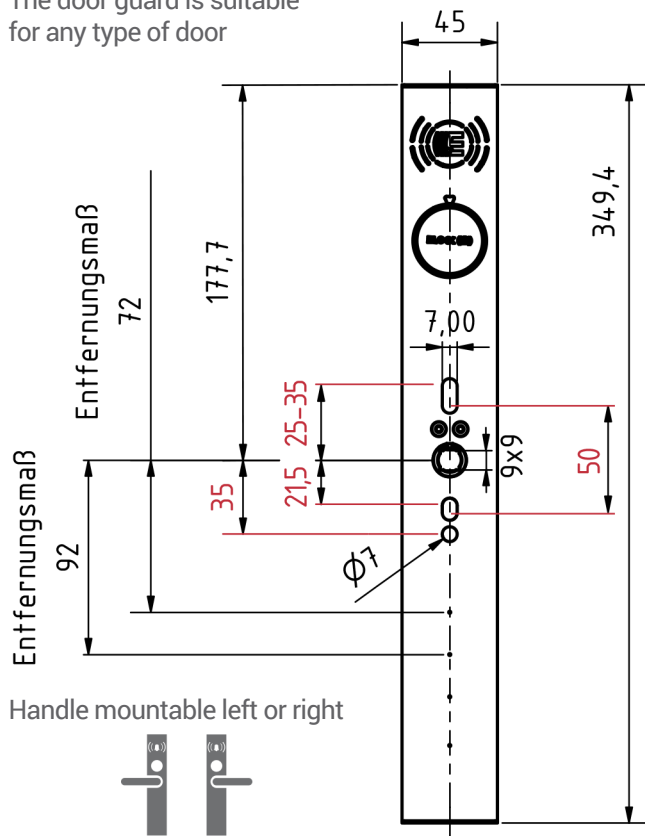
- Release with transponder key or via radio pushbutton
- Optional with time management (.ZK)
- Optional with MorseCode (.MRS)
- Can be combined with locking cylinder



The combination of the TW4S escape route safety system and the V1E self-locking panic lock ensures reliable and barrier-free opening and closing of the doors.

- Door closed = automatic and insurance-compliant full locking
- High-quality stainless steel

The door guard is suitable for any type of door



Detaillierte Technische Daten
QR-Code scannen oder Link anklicken

<https://elock2.com/index.php?id=578>



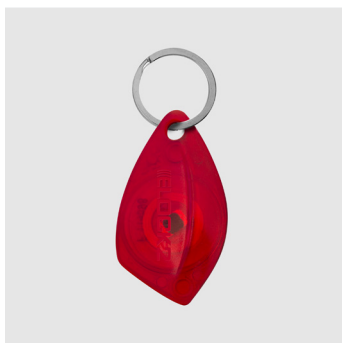
Zertifikate / Prüfdokumente
QR-Code scannen oder Link anklicken

<https://elock2.com/index.php?id=605>



Ausschreibungstext
Scan QR code or click link

<https://elock2.com/index.php?id=606>



Release with Transponder

Scan QR code or click link



<https://elock2.com/index.php?id=995>



Release with wireless pushbutton

Scan QR code or click link



<https://elock2.com/index.php?id=985>



Release with MorseCode

Scan QR code or click link



<https://elock2.com/index.php?id=986>



Release with Third-party system

Scan QR code or click link



<https://elock2.com/index.php?id=983>

Your personal consultant:

Innovative access solutions from the first-place winner



<https://elock2.com/index.php?id=368>

Produktkatalog als PDF



<https://elock2.com/index.php?id=581>

Neuigkeiten



<https://elock2.com/index.php?id=861>

Infomaterial Produkte



<https://elock2.com/index.php?id=860>

Infomaterial Systeme und Funktionen



<https://elock2.com/index.php?id=622>

Ausschreibungstexte



<https://elock2.com/index.php?id=621>

Zertifikate / Prüfdokumente

Discover the whole ELOCK2 system now



Mechanical / digital
automatic locks with panic
function



Intelligent escape
route protection



Digital furniture locks



Digital locking cylinders
(also with panic function)



Digital padlocks and tube safes



Access terminal e.g.
for doors and barriers

ELOCK2 access system with 360° perfection

Patented systems and highly differentiated access management with ELOCK2 software with interfaces to alarm and database systems (according to open standards).

Wireless installation in all standard doors (including glass and tubular frame doors) significantly reduces investment costs in new construction and retrofitting compared to wired systems.

Excellent scalability in the introduction and expansion of locking systems, even for unnetworked properties, thanks to virtual networking. Systems are suitable for fire doors and escape doors.

Excellent technical support for hardware and software from qualified service partners and directly from the manufacturer ELOCK2 - the medium-sized family business with short routes.

ELOCK2
MADE IN GERMANY

Gutenbergstr.10-12
D-73779 Deizisau
vertrieb@elock2.de

Quality certified by
DIN EN ISO 9001

Tel: +49(0)711 901213 - 86
Fax: +49(0)711 901213 - 99
www.elock2.com

2M01114DGTWSA4H6R006009R0101 ENG

We reserve the right to make technical and optical changes to the products. We assume no liability for misprints and other misunderstandings.